

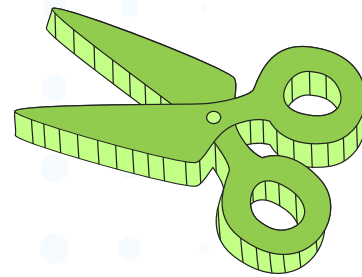
SUPPLY LISTS

📢 Pre-School Supplies

- Extra change of clothes in an extra large Ziploc bag (2 pairs of underwear for nursery) (each item should be labeled)
- 1 box of tissues
- 2 boxes of wipes
- 1 roll of paper towels
- 2 boxes of Ziploc bags (one box gallon size, one box sandwich bags)
- 2 pictures of your child
- 1 picture of each member of your family
- A plastic smock (for nursery)
- 2 large boxes of cereal and 1 large bag or box of pareve nut free snack (for the class)
- A knapsack, large enough to hold notebooks and projects

📢 Additional Supplies For Specific Classes

- **Nursery:** A plastic smock and a rest mat
- **Kindergarten:** A soft loose leaf (one inch) 5 glue sticks
- **Pre-1A:** 1 marble notebook
 1 pack of index cards
 1 plastic folder with pockets on the bottom
 5 Elmers glue sticks



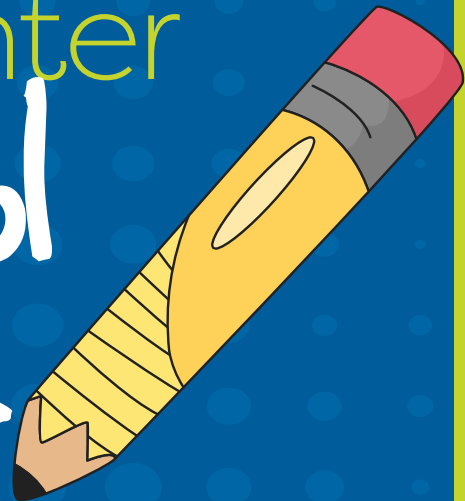
📢 Health Guidelines

- Do not send your child to school if he has a fever, or vomited in the last 24 hours.
- All children must have updated immunization and health forms.



Hollander Early Childhood Center

Pre-School Handbook



ARRIVAL AND DISMISSAL

🔊 **School Hours**

Nursery

9:15AM - 2:30PM

Kindergarten

9:00AM-3:00PM

Pre-1A

8:50AM- 3:00PM

Dismissal

Nursery

2:30 - 2:45 PM

Kindergarten

2:45 - 3:00 PM

Pre-1A

2:45 - 3:00 PM

🔊 **Friday Dismissal**

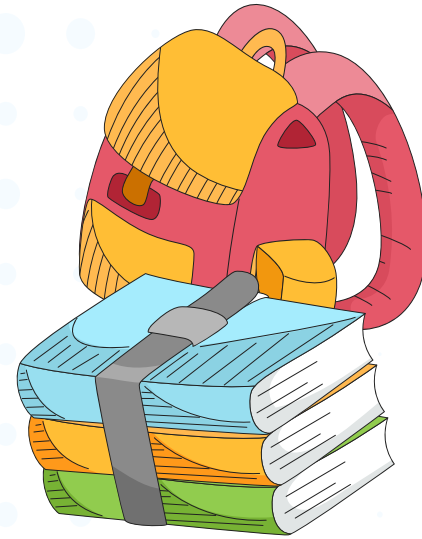
Nursery and Kindergarten

12:10PM -12:20PM

Pre-1A

12:15PM - 12:30PM

Busses will be loaded at 12:25PM



🔊 **Carpool Instructions**

- Arrival begins through the back door
- Enter the parking lot on Serena Road and follow the traffic flow to the Moros.
- Please unbuckle and take your child out of the car. Bring them to the Morah at the back doors.
- The Moros will bring your son inside.
- Please do not let your child out of the car until you are the 1st or 2nd car.
- When exiting your car, you MUST shut off your car (and take your keys).
- At dismissal, a teacher will bring your child to your car. Parents please seat your child in the car.

🔊 **Dismissal Changes**

All dismissal changes must be made in writing or by calling the school office, before 2:00PM.

Please confirm on orientation day what time your child is going home and how.

Day Care Costs
 8:15AM- 9:00AM \$600 • 2:30PM- 3:00PM \$300 (Nursery) • 3:00PM- 4:00PM \$1,000

FOOD RELATED

🔊 **Snacktime At School**

- Please send in one box of cereal and one pareve nut free large bag of snack each month.

🔊 **Nut Free Snack Suggestions**

- Fruits and Vegetables
- Kidzels Pretzels
- Herr's Potato Chips
- Lieber's Snackers
- Manischewitz Tam Tams
- Vitarroz Honey Graham Crackers
- Lieber's Honey Graham Crackers
- Kitov Corn Pops
- Twizzlers
- Lieber's Animal Crackers
- Kedem Tea Biscuits
- Assorted Cereals (check labels)

🔊 **Birthday Parties**

You may send in the following items for the party:

- Nut free pareve cup cakes or doughnuts (no cake).
- One prize or snack for each child.
- A drink
- "A present for the class" - Example: new book, CD, or game
- Please do not send in prizes or paper goods with characters on them.
- If you would like to plan a party Email: Rgoldberg@yoss.org

🔊 **A Note About Allergies**

- The Hollander Early Childhood Center at Yeshiva of South Shore is a peanut-aware school.
- Please do not send products containing nuts or manufactured on equipment that processes nuts.
- Please check all snack and lunch ingredients carefully before sending them in to school with your child.

Please be aware that all food and drink items sent to school must clearly be labeled with a proper kashrus symbol such as an OU, OK, Chof K, Star K, etc. In addition, please be advised that all food sent in for Shabbos and birthday parties must be Cholov Yisroel or Pareve.